

# Type C1b

3-Bedroom

192 sq. m. / 2067 sq. ft.

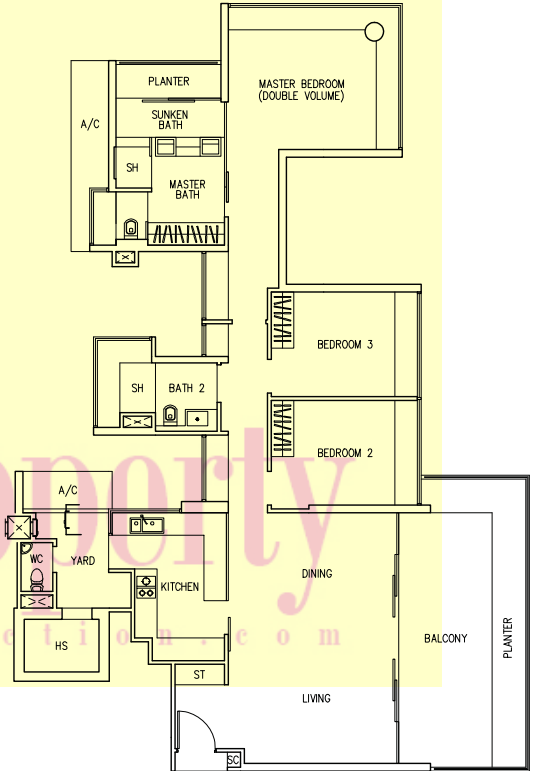
(inclusive of 19 sq m / 205 sq ft of void area)

**Block 2** (Even storeys)

#06-03 to #20-03

**Block 6** (Even storeys)

#06-05 to #20-05



ROSEWOOD CLOSE

The above plans are subject to change as may be approved by the relevant authority.  
Areas are approximate measurements and subject to final survey. Plans are not to scale.